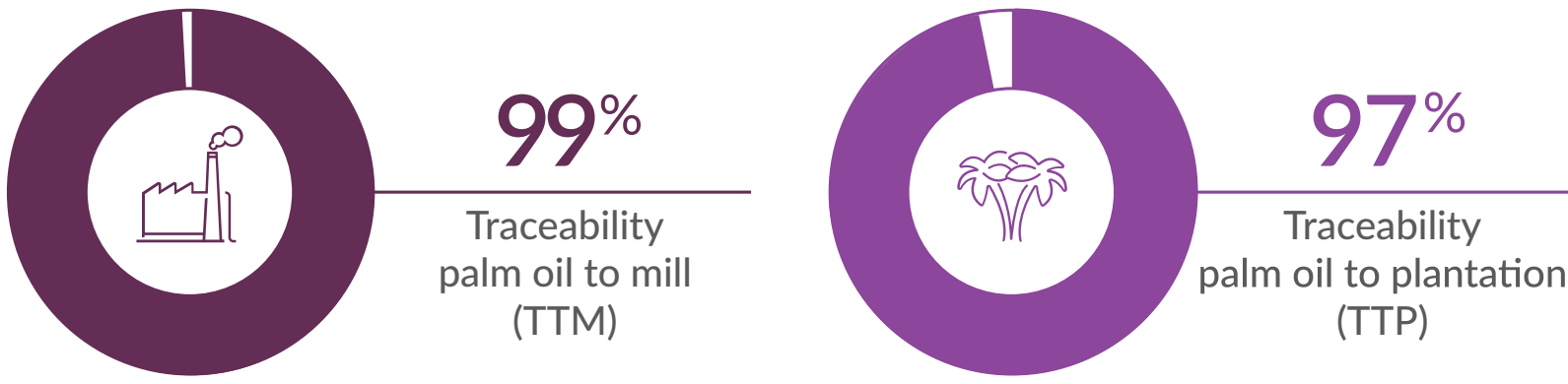


Numbers from October - December 2025, scores calculated on data availability at cut off time.

Palm Oil

Traceability on global & regional level

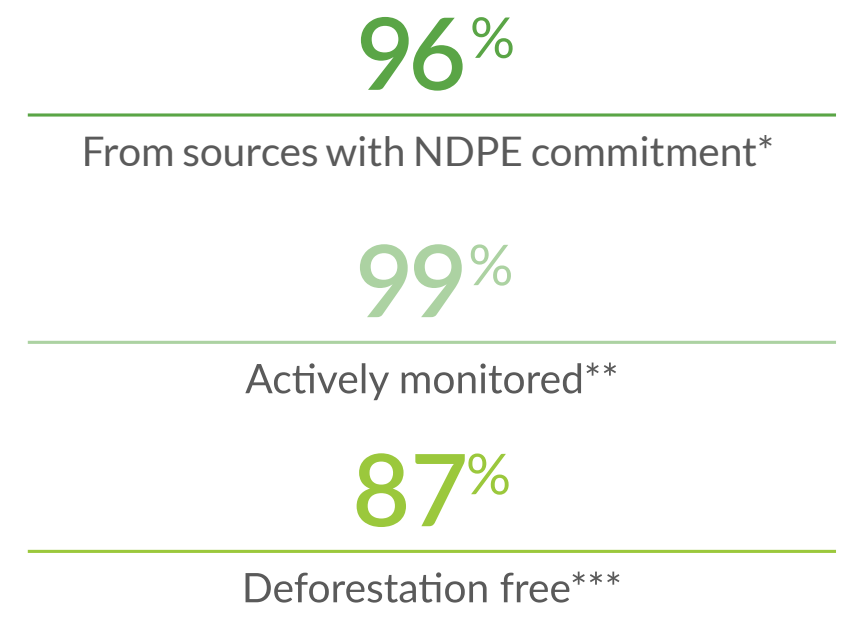
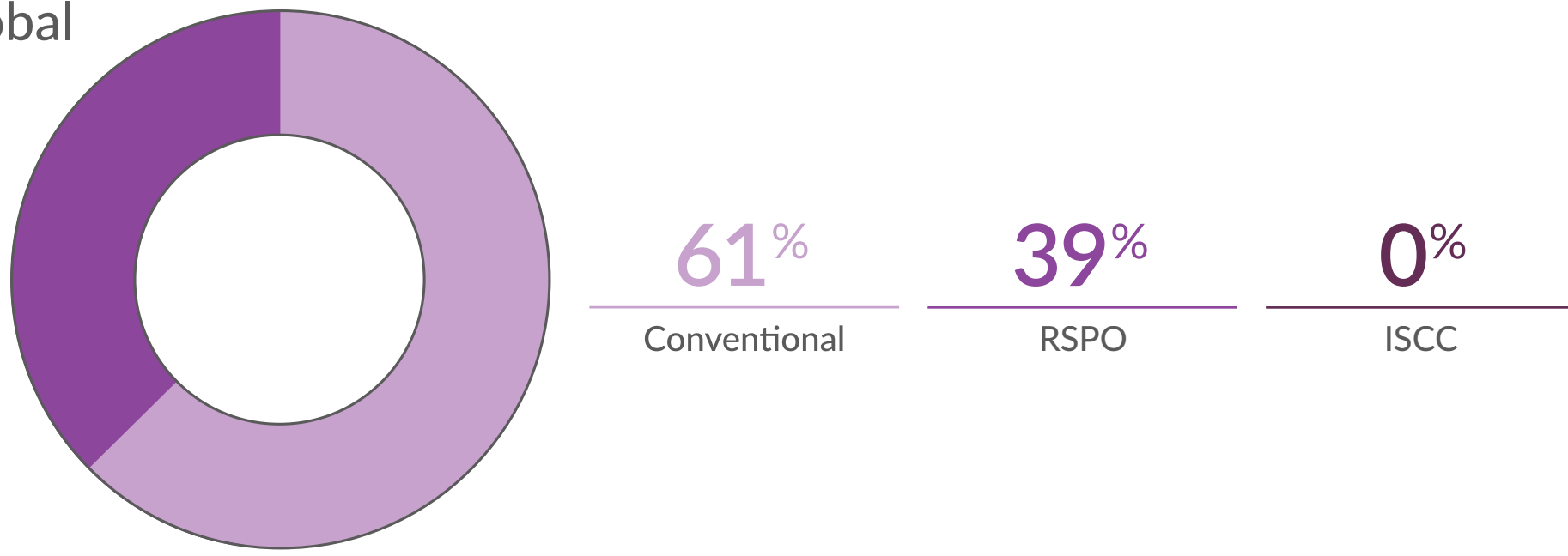
Global



North America	100% Palm oil to mill	99% Palm oil to plantation
Europe	100% Palm oil to mill	100% Palm oil to plantation
Latin America	100% Palm oil to mill	100% Palm oil to plantation
Asia, Middle East and Africa	97% Palm oil to mill	94% Palm oil to plantation

Certified volumes sourced (market driven)

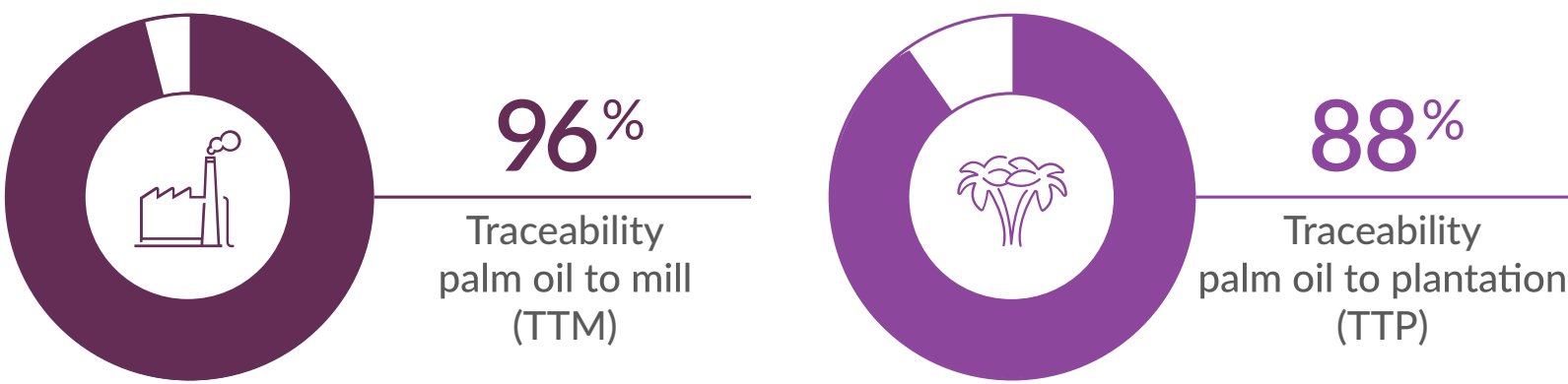
Global



Palm Kernel

Traceability on global & regional level

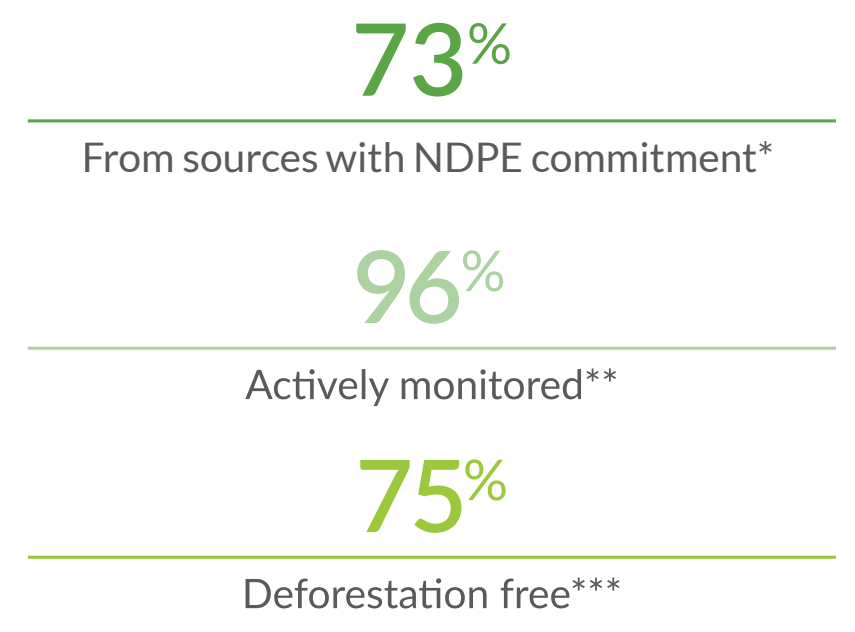
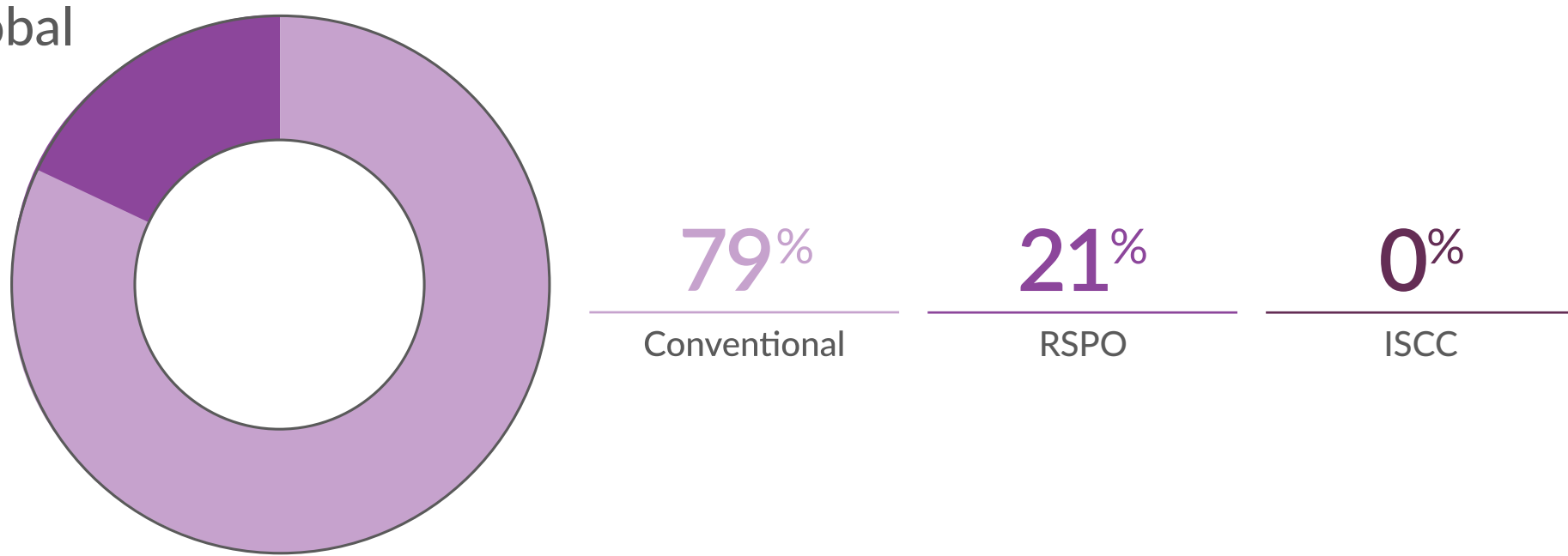
Global



North America	100% Palm oil to mill	100% Palm oil to plantation
Europe	93% Palm oil to mill	92% Palm oil to plantation
Latin America	100% Palm oil to mill	100% Palm oil to plantation
Asia, Middle East and Africa	95% Palm oil to mill	80% Palm oil to plantation

Certified volumes sourced (market driven)

Global



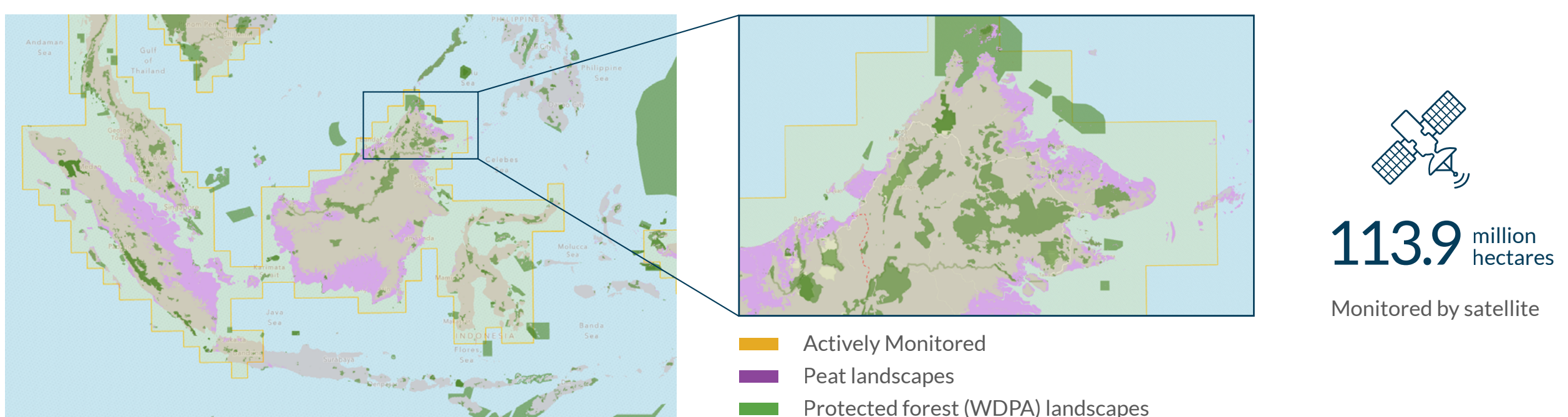
* From sources with NDPE commitment equal or stronger to set minimum requirements.
 ** Actively Monitored by Satelligence and EarthEqualizer via optical and radar satellites. Reporting of Land Use Change alerts on bi-weekly basis. Includes RSPO IP certified mills.
 *** Deforestation Free equals 'delivering' under the [NDPE IRF method](#).

Verification

Since the end of 2017 we have actively monitored Peninsula and Sabah in Malaysia using satellites.

- On a bi-weekly basis we check an area of 30 Million hectares for land use change by analyzing near real time satellite images.
- Using our powerful GIS platform combining forest and peat maps with the latest Sentinel-2 images, we are actionable on alerts and we follow up with suppliers and stakeholders if necessary.

You can find more details on the way we expand the monitored area [here](#).



Transparency

We commit to transparency in every action we take and every report we provide. You can find our way of calculating the figures shown in this dashboard in this [protocol](#).

