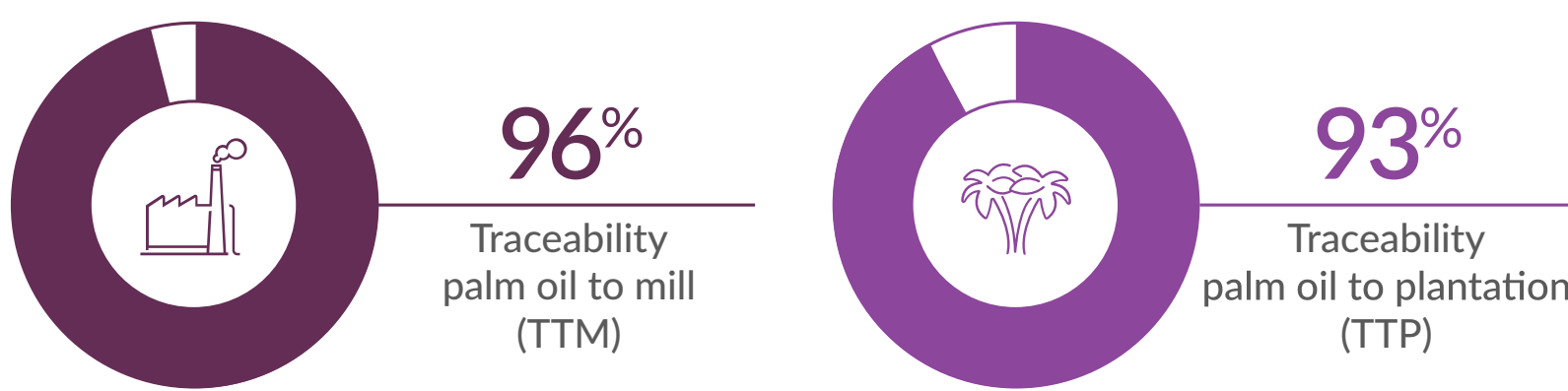


Numbers from April - June 2025, scores calculated on data availability at cut off time.

Palm Oil

Traceability on global & regional level

Global



| | | |
|------------------------------|--------------------------|--------------------------------|
| North America | 100% Palm oil to mill | 99% Palm oil to plantation |
| Europe | 100% Palm oil to mill | 100% Palm oil to plantation |
| Latin America | 100% Palm oil to mill | 96% Palm oil to plantation |
| Asia, Middle East and Africa | 91% Palm oil to mill | 87% Palm oil to plantation |

Certified volumes sourced (market driven)

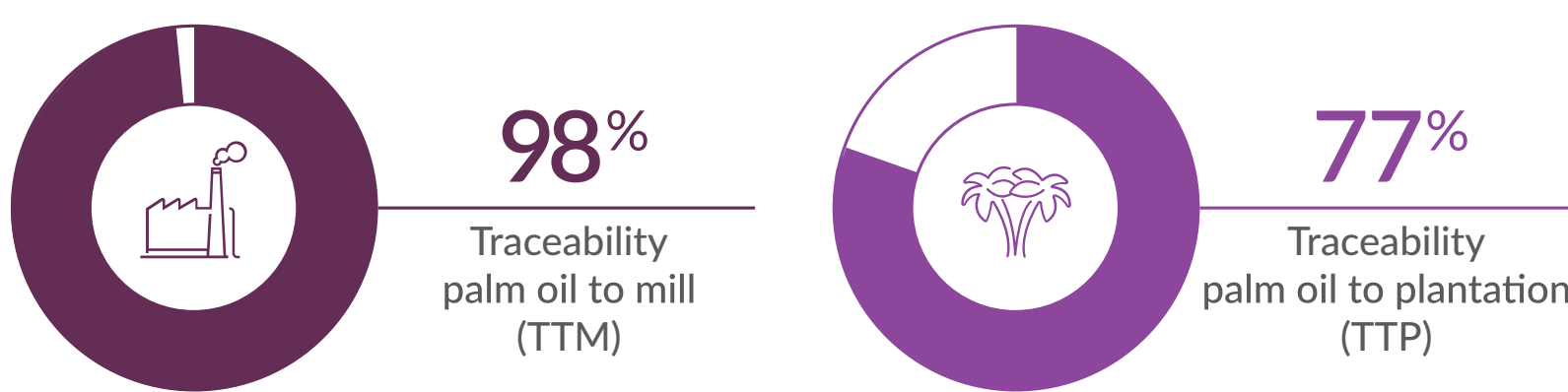
Global



Palm Kernel

Traceability on global & regional level

Global



| | | |
|------------------------------|--------------------------|--------------------------------|
| North America | 100% Palm oil to mill | 100% Palm oil to plantation |
| Europe | 97% Palm oil to mill | 96% Palm oil to plantation |
| Latin America | 100% Palm oil to mill | 81% Palm oil to plantation |
| Asia, Middle East and Africa | 98% Palm oil to mill | 58% Palm oil to plantation |

Certified volumes sourced (market driven)

Global



* From sources with NDPE commitment equal or stronger to set minimum requirements.

** Actively Monitored by Satelligence and EarthEqualizer via optical and radar satellites. Reporting of Land Use Change alerts on bi-weekly basis. Includes RSPO IP certified mills.

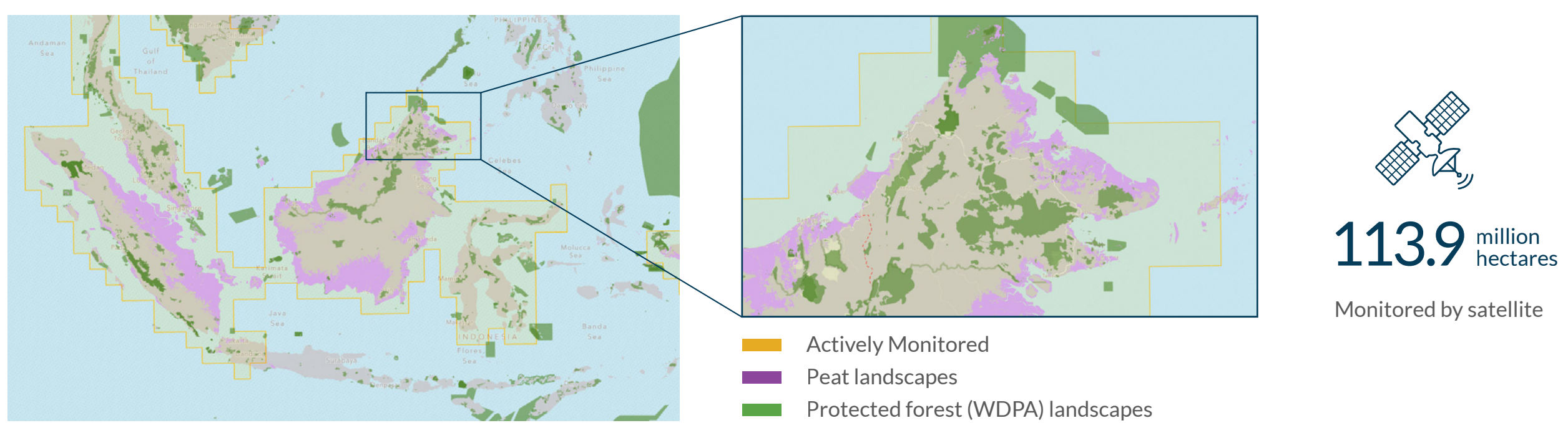
*** Deforestation Free equals 'delivering' under the [NDPE IRF method](#).

Verification

Since the end of 2017 we have actively monitored Peninsula and Sabah in Malaysia using satellites.

- On a bi-weekly basis we check an area of 30 Million hectares for land use change by analyzing near real time satellite images.
- Using our powerful GIS platform combining forest and peat maps with the latest Sentinel-2 images, we are actionable on alerts and we follow up with suppliers and stakeholders if necessary.

You can find more details on the way we expand the monitored area [here](#).



Transparency

We commit to transparency in every action we take and every report we provide. You can find our way of calculating the figures shown in this dashboard in this [protocol](#).



1370
Supplying Mills